

## North Cumbria University Hospitals NHS Trust Monthly Bulletin: April 2010 to March 2011

### Monthly Bulletin: April 2010 to March 2011

This bulletin provides a breakdown of all injury attendances at North Cumbria University Hospitals NHS Trust emergency departments (EDs) between April 2010 and March 2011.

Please note, in late 2009 North Cumbria University Hospitals NHS Trust EDs changed their IT system. As a result, a number of the data collection fields changed, meaning certain injury categories are no

longer collected (e.g. falls). This change has led to a reduction in the number of recorded ED injury attendances, and therefore all figures presented here should be viewed with caution.

The following tables and figures provide details of these attendances by month including: total numbers; patient age and gender; injury type; referral method; incident location; and disposal.

**Figure 1: Gender of ED injury attendances by month, April 2010 to March 2011**

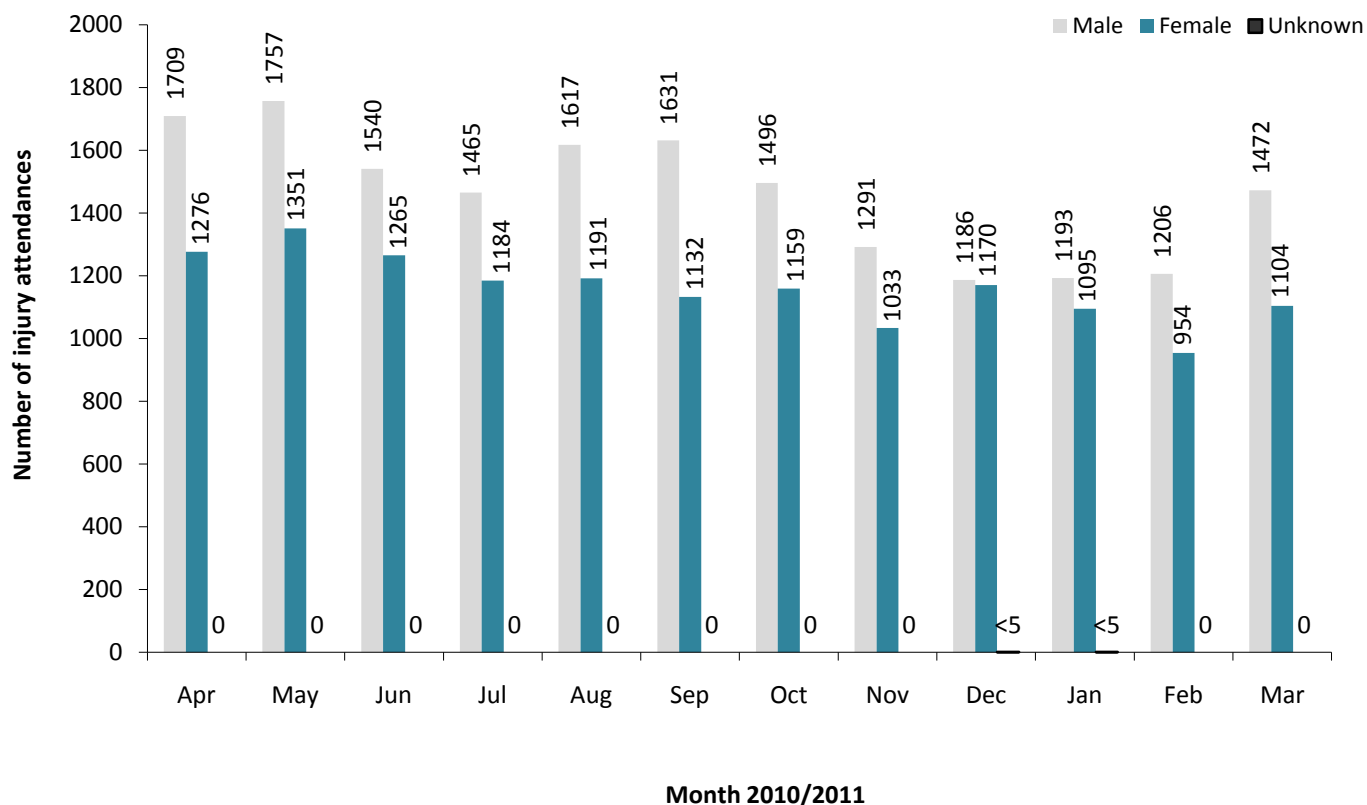


Figure 2: Age group of ED injury attendances by month, April 2010 to March 2011

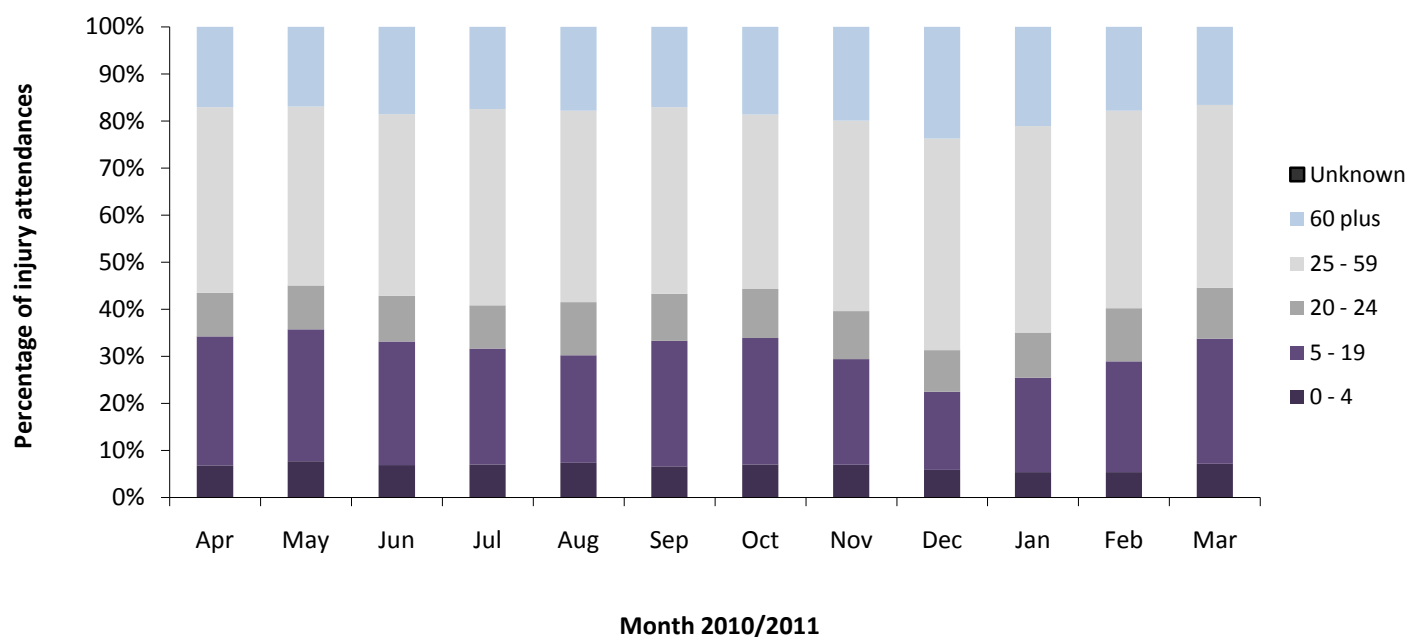


Table 1: ED injury attendances by injury group and month, April 2010 to March 2011<sup>12</sup>

Injury group	Apr	May	Jun	Jul	Aug	Sep	Oct	Nov	Dec	Jan	Feb	Mar	Total	%
Other injury	2235	2359	2157	2035	2168	2009	1929	1727	1886	1742	1551	1874	23672	75
Sports injury	368	342	272	212	251	392	308	230	56	183	256	337	3207	10
Road traffic collision	147	165	127	177	135	155	159	163	190	156	139	129	1842	6
Assault	122	138	143	111	116	125	125	104	130	130	97	130	1471	5
Deliberate self-harm	113	104	106	114	138	82	134	100	95	78	117	106	1287	4
<b>Total</b>	<b>2985</b>	<b>3108</b>	<b>2805</b>	<b>2649</b>	<b>2808</b>	<b>2763</b>	<b>2655</b>	<b>2324</b>	<b>2357</b>	<b>2289</b>	<b>2160</b>	<b>2576</b>	<b>31479</b>	<b>100</b>

Table 2: ED injury attendances by source of referral and month, April 2010 to March 2011<sup>3</sup>

Source of referral	Apr	May	Jun	Jul	Aug	Sep	Oct	Nov	Dec	Jan	Feb	Mar	Total	%
Self referral	2057	2118	1863	1758	1913	1839	1703	1486	1503	1465	1396	1724	20825	66
Emergency services	588	599	572	565	571	562	597	533	572	496	485	472	6612	21
GP	102	114	114	77	89	82	99	84	92	87	66	119	1125	4
Work	61	74	77	92	80	85	70	75	56	72	61	83	886	3
Other	97	76	70	69	82	91	63	66	68	59	55	72	868	3
Health care provider: same or other	26	60	64	53	40	41	48	29	35	41	40	34	511	2
Educational establishment	31	34	22	15	***	34	39	31	***	46	38	40	338	1
Police	20	25	21	18	29	27	35	19	22	22	19	31	288	1
Local authority social services	***	8	***	***	***	***	***	***	***	***	***	***	22	0
General Dental Practitioner	***	***	***	***	***	***	***	***	***	***	***	***	***	0
Healthcare provider - NHS direct	***	***	***	***	***	***	***	***	***	***	***	***	***	0
<b>Total</b>	<b>2985</b>	<b>3108</b>	<b>2805</b>	<b>2649</b>	<b>2808</b>	<b>2763</b>	<b>2655</b>	<b>2324</b>	<b>2357</b>	<b>2289</b>	<b>2160</b>	<b>2576</b>	<b>31479</b>	<b>100</b>

<sup>1</sup> Please note that all numbers less than five have been suppressed (with \*\*\*) in line with patient confidentiality; and if there is only one number less than five in a category then two numbers will be suppressed to prevent back calculations from totals.

<sup>2</sup> Please note percentages might not add to one hundred due to rounding.

<sup>3</sup> GP=general practitioner and NHS=National Health Service.

**Table 3: ED injury attendances by location of incident and month, April 2010 to March 2011<sup>4</sup>**

Location	Apr	May	Jun	Jul	Aug	Sep	Oct	Nov	Dec	Jan	Feb	Mar	Total	%
Home	1298	1358	1207	1129	1230	1130	1109	1006	958	998	913	1119	13455	43
Other	1139	1110	1100	989	1183	1172	1047	874	988	895	857	975	12329	39
Public place	279	364	242	278	246	222	203	187	251	157	168	171	2768	9
Work	151	156	144	182	***	126	155	140	***	104	107	143	1659	5
Educational establishment	118	120	112	71	***	113	141	117	***	135	115	168	1268	4
<b>Total</b>	<b>2985</b>	<b>3108</b>	<b>2805</b>	<b>2649</b>	<b>2808</b>	<b>2763</b>	<b>2655</b>	<b>2324</b>	<b>2357</b>	<b>2289</b>	<b>2160</b>	<b>2576</b>	<b>31479</b>	<b>100</b>

**Table 4: ED injury attendances by disposal and month, April 2010 to March 2011**

Disposal	Apr	May	Jun	Jul	Aug	Sep	Oct	Nov	Dec	Jan	Feb	Mar	Total	%
Discharged - no follow-up treatment	1871	1949	1637	1573	1632	1644	1584	1381	1153	1160	1072	1362	18018	57
Referred to other out-patient clinic	426	452	388	350	368	407	392	332	461	354	341	413	4684	15
Admitted to hospital bed of the same health care provider	329	366	352	279	355	316	320	275	339	293	292	285	3801	12
Discharged - follow-up treatment by GP	152	136	139	193	156	126	95	102	177	247	246	256	2025	6
Referred to ED clinic	20	30	117	119	126	134	100	121	96	96	96	120	1175	4
Left department before being treated	103	102	86	64	71	89	79	42	67	64	45	65	877	3
Referred to other health care professional	35	40	46	47	61	31	54	39	41	42	39	44	519	2
Transferred to other health care provider	35	19	22	14	20	11	20	14	10	21	16	11	213	1
Left department having refused treatment	8	7	6	7	5	***	5	7	***	8	7	12	78	0
Other	***	5	11	***	13	***	5	10	6	***	5	7	74	0
Died in department	***	***	***	***	***	***	***	***	***	***	***	***	15	0
Unknown	***	***	***	***	***	***	***	***	***	***	***	***	***	0
Referred to fracture clinic	***	***	***	***	***	***	***	***	***	***	***	***	***	0
<b>Total</b>	<b>2985</b>	<b>3108</b>	<b>2805</b>	<b>2649</b>	<b>2808</b>	<b>2763</b>	<b>2655</b>	<b>2324</b>	<b>2357</b>	<b>2289</b>	<b>2160</b>	<b>2576</b>	<b>31479</b>	<b>100</b>

Published June 2011

Johnathan Rooney (Lancashire TIIG Officer)

Centre for Public Health, Liverpool John Moores University, 2nd Floor, Henry Cotton Campus, Liverpool, L3 2ET

Tel: 0151 231 4513 Email: j.rooney@ljmu.ac.uk

Website: [www.tiig.info](http://www.tiig.info) (please note data requests should be made through the website)

<sup>4</sup> Educational establishment includes: educational establishment; school other; school; school playground; and, school sport. 'Public place' includes public place and playing out.